

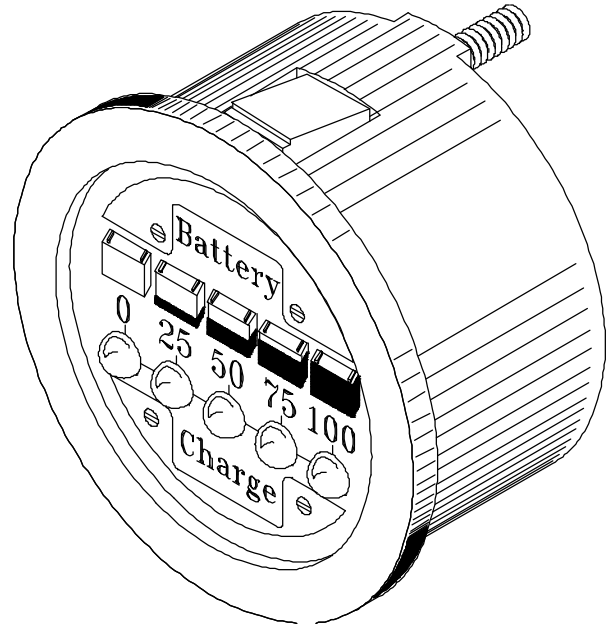


elektrosistem



## MICROPROCESSOR BATTERY CHARGE INDICATOR

### BCL-02



Today the use of electronic instruments on machines dedicated to material handling has become a usual procedure while precision and appearance have become essential requirements for engineers and users.

BCL-02 is a microprocessor battery level indicator suitable for 12-24-30-36V batteries where the rated battery voltage can be selected and displayed.

Battery level is indicated by means of 5 LEDs and is stored in the microprocessor when the key is switched off. The indication is not affected by current peaks thanks to a delayed reading. The indicator features lift lockout function with adjustable voltage level; the lockout is disabled only when the battery is charged.

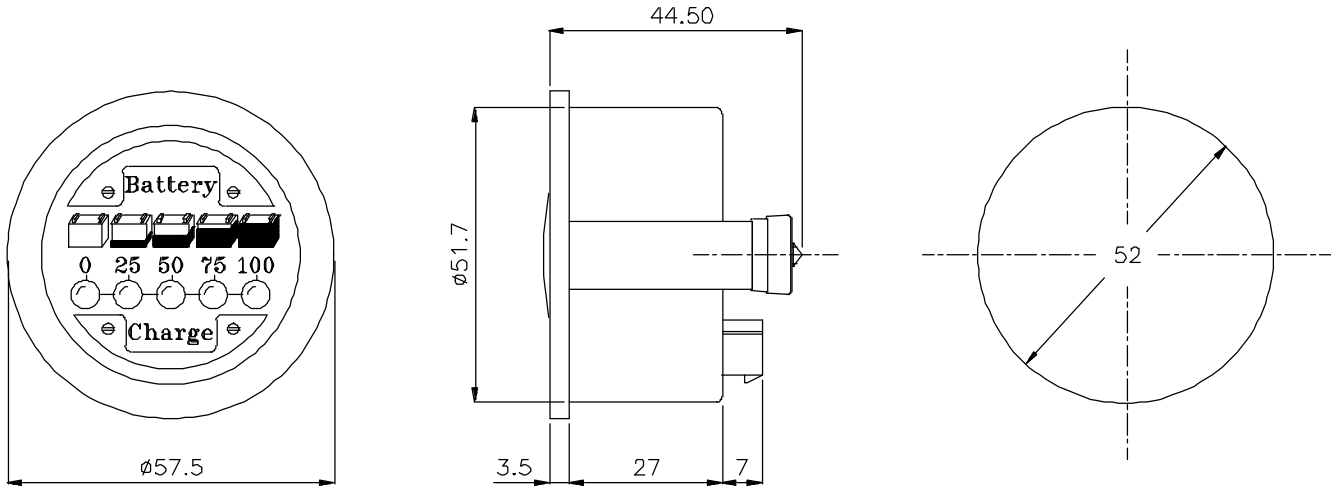
Customized discharge curves for special uses and according to the battery type can be programmed.

#### TECHNICAL SPECIFICATIONS

Standard voltage .....	12-24-30-36 V
Standard voltage for lift lockout .....	1,625 V/cell
Voltage range for lift lockout .....	+/- 0,125 V/cell
Min. absorbed current .....	5 mA
Lockout max. continuous current .....	1 A
Operating temperature .....	-20 +40°C
Voltage level for charge battery .....	2,07 V/cell
Delayed reading of current peaks	
Reverse polarity protection	
Dustproof and rainproof according to DIN 40050 IP.53 protection	

~~NEWS~~

DIMENSIONS AND ASSEMBLY HOLES



WIRING DIAGRAM

